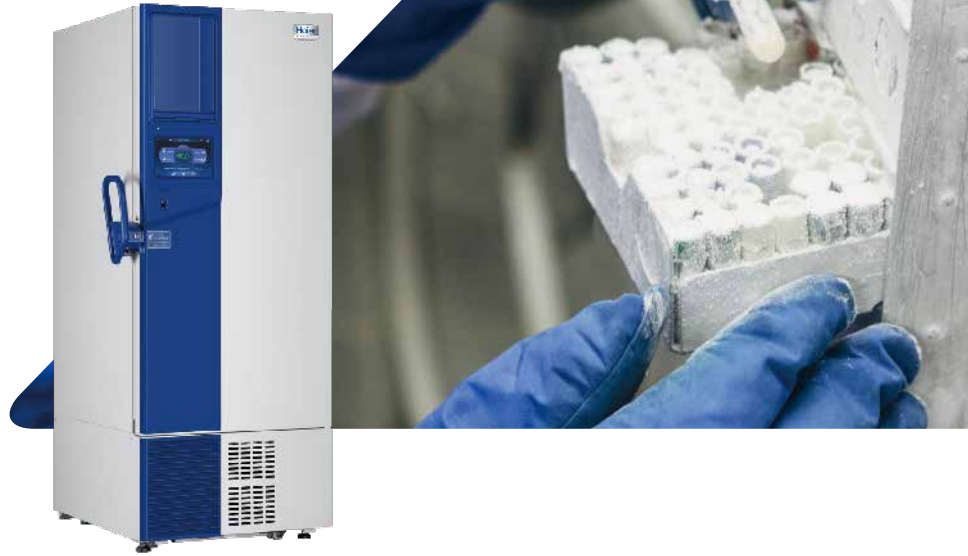


-86°C ULT Freezer DW-86L578ST



GENERAL

| | | |
|----------------------------|----|----------------|
| Storage Capacity(L/Cu.Ft) | | 578/20.4 |
| Temperature Range(°C) | | -40 ~ -86 |
| Noise (dB(A)) | | 53 |
| Net/Gross Weight (kg) | | 325/355 |
| Exterior Dimension (W×D×H) | mm | 895*998*1980 |
| | in | 35.2*39.3*78.0 |
| Interior Dimension (W×D×H) | mm | 620*716*1310 |
| | in | 24.4*28.2*51.6 |

ENVIRONMENTAL & ELECTRICAL DATA

| | | |
|------------------------------|--|--------------|
| Electrical Power (V/HZ) | | 208 ~ 230/50 |
| Power(W) | | 1400 |
| Power Consumption(kW-hr/day) | | 12 |
| Electrical Current (A) | | 10 |
| Building Supply Rating (A) | | 16 |
| Power Lead Length (m) | | 2.5 |
| Heat Rejection (BTU/day) | | 40947 |
| Ambient Temperature(°C) | | 10 - 32 |

REFRIGERATION CONFIGURATION

| | | |
|------------------------------|--|--|
| Refrigeration System Type | | HC |
| Compressor Type/Brand/Number | | Hermetic Reciprocating Type/SECOP/2 |
| Compressor Capacity (W) | | 1300+1300 |
| Evaporator Type | | Copper Tube Evaporator |
| Defrost Method | | Manual |
| Refrigerant Charge/Flammable | | R600a+R1150+R14 Mix in A / the same in B/Flammable |

CONTROLLER/ELECTRICAL SYSTEM FEATURES

| | |
|---------------------------------|-----------------------------|
| Controller Level | Top |
| Power Switch | 16A |
| Controller Type | Microprocessor,touch screen |
| Setpoint Security | Yes |
| Controller Sensor | PT100 |
| Remote Alarm Terminals | Remote Alarm Port, RS485 |
| Adjustable High/Low Temp Alarms | Y |
| Auto Voltage Safeguard | Y |

CONSTRUCTION

| | |
|-------------------------------------|---|
| Insulation | VIP+CFC Free Foaming Agent |
| Exterior Door Seal | Four Seal On the Outside Door Seal Strip |
| Interior Door Seal | One Seal On the Interior Door Seal Strip |
| Shelves/Capacity/Dims/Material | 3 stainless steel adjustable shelves with dimensionmm 596*657 mm(W*D), max capacity per shelf:80 kg,176.4 lbs |
| Casters | Y/4 |
| Exterior Material | Color Coating Steel Plate |
| Interior Material | Color Coating Steel Plate |
| Door Thickness (mm) | 90 |
| Cabinet Thickness (mm) | 90 |
| Inner Door | Four Solid Door |
| Condenser Type | Fin condenser |
| Fan Brand | EBM |
| Back Up Battery For Alarm Functions | Support high/low temperature, power failure, door open, sensor failure, high ambient temperature, hot condenser, low battery alarms and cooling system failure alarm,abnormal voltage alarm,power board failure alarm |

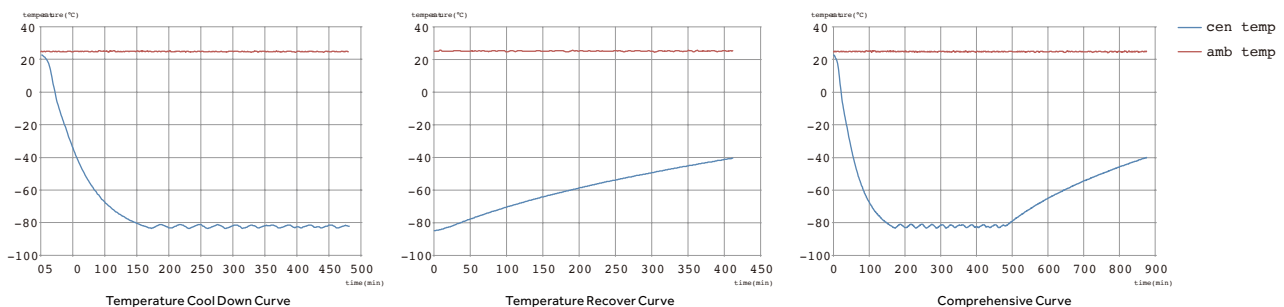
PERFORMANCE

| | |
|---|-----|
| Temperature Uniformity(°C) | ±5 |
| Temperature Accuracy(°C) | 0.1 |
| Cool Down Time (25°C ambient to -80°C) mins | 180 |
| Warm Up Time (25°C ambient -80°C to -50°C) mins | 280 |
| 1 Min Door Open Recovery Time (ambient 25°C running temp -80°C)mins | 30 |

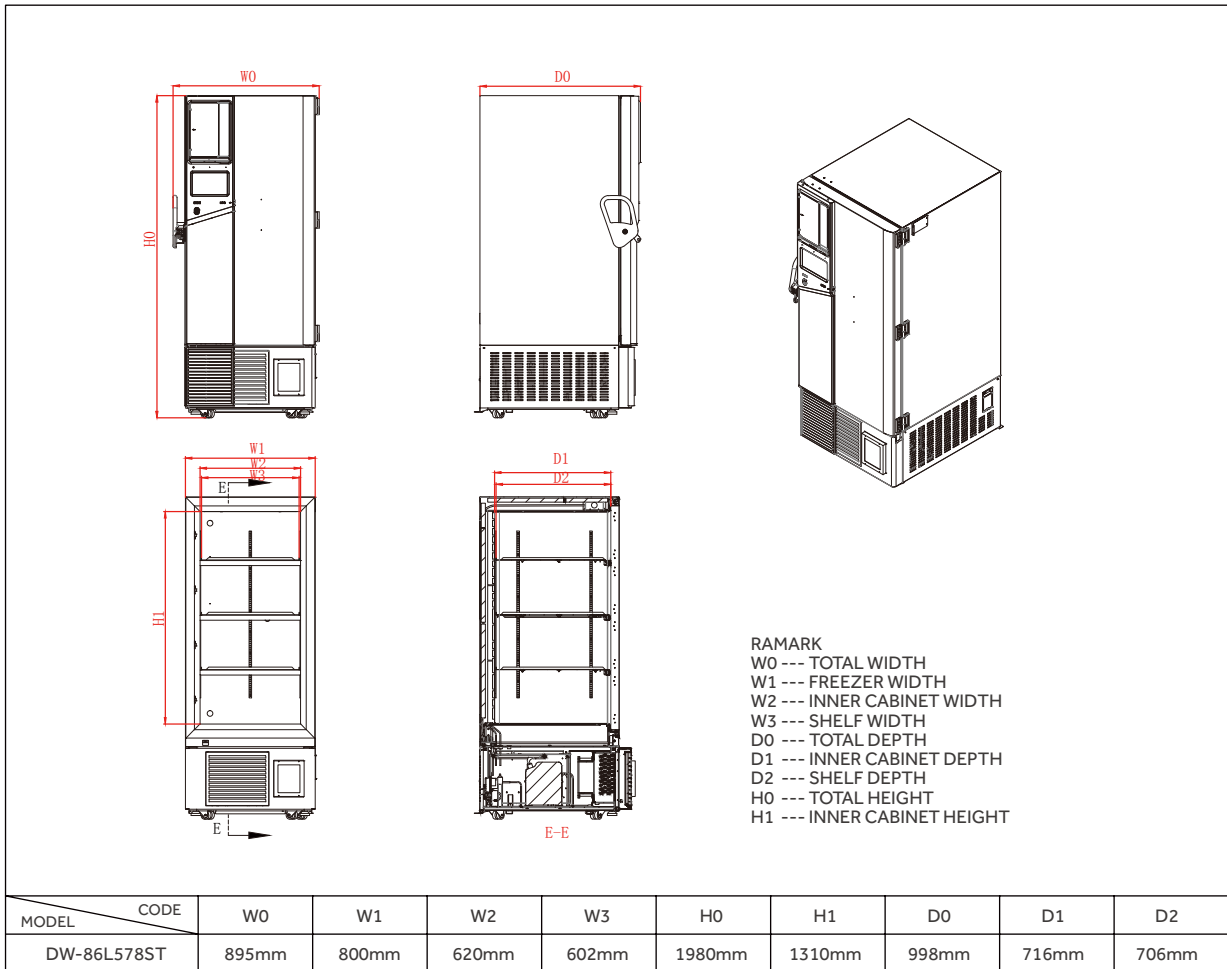
CERTIFICATE

CE

TYPICAL PERFORMANCE CHARACTERISTICS IN 25°C AMBIENT

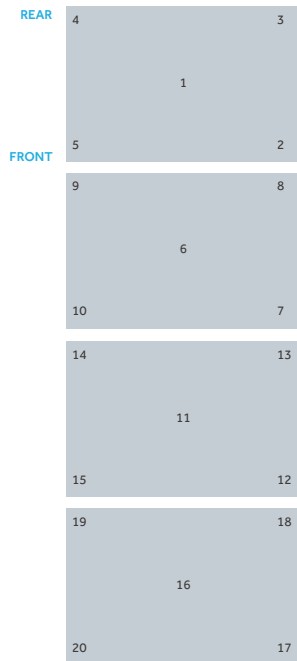


PRODUCT DIMENSION DRAWINGS

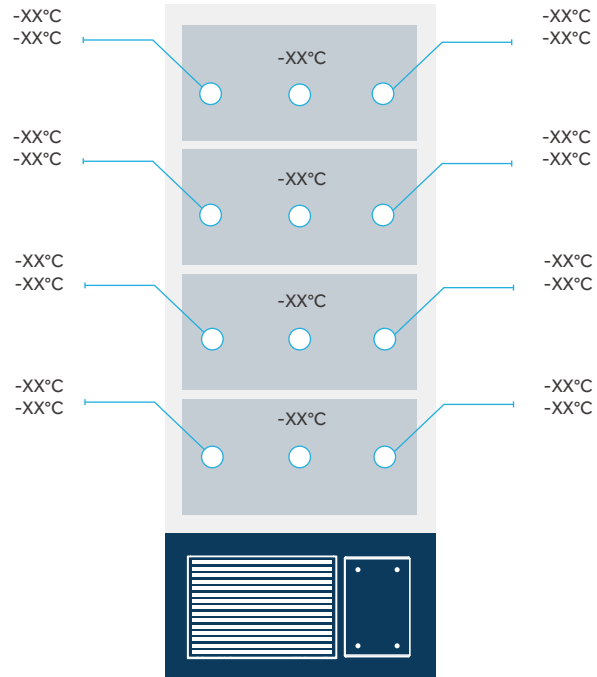


TYPICAL CABINET TEMPERATURE MAP

Top view of shelves



Front view of shelves



| °C | 1 | 2 | 3 | 4 | 5 | 6 | 7 | 8 | 9 | 10 |
|------|-------|-------|-------|-------|-------|-------|-------|-------|-------|-------|
| Max. | -80.2 | -79.7 | -80.0 | -79.7 | -80.5 | -81.0 | -80.6 | -81.3 | -81.7 | -80.9 |
| Min. | -84.1 | -83.2 | -83.6 | -83.5 | -84.2 | -83.6 | -83.1 | -84.4 | -84.9 | -83.8 |
| Avg. | -82.2 | -81.5 | -81.8 | -81.6 | -82.4 | -82.3 | -81.9 | -82.9 | -83.3 | -82.4 |

| °C | 11 | 12 | 13 | 14 | 15 | 16 | 17 | 18 | 19 | 20 |
|------|-------|-------|-------|-------|-------|-------|-------|-------|-------|-------|
| Max. | -81.1 | -80.3 | -81.0 | -80.2 | -80.6 | -78.6 | -78.8 | -78.4 | -79.1 | -79.4 |
| Min. | -83.2 | -82.4 | -82.4 | -82.6 | -83.1 | -81.3 | -81.5 | -81.2 | -81.5 | -81.9 |
| Avg. | -82.2 | -81.4 | -82.3 | -81.4 | -81.8 | -80.0 | -80.2 | -79.8 | -80.3 | -80.7 |

Ihr Fachhändler:
www.axon-labortechnik.de



Axon Labortechnik GmbH
 Im Braumenstück 16 - D-67659 Kaiserslautern
 Verkaufsbüro Tel. 06223/95 41 190 Fax: 06223/95 40 714
info@axon-labortechnik.de

